

FS Locks Gun Vault

Standard and Deluxe Model

MiniVault and MultiVault

Portable Gun Safes



Owners Manual
With Quick Start
Instructions

FS Locks

1146 N Central Ave #227

Glendale, CA 91202

(877) 633-0293

www.fslocks.com

info@fslocks.com

Covered by United States Patent Numbers 5,161,396 and 5,549,337

TABLE OF CONTENTS

- Warnings and Recommendations
- Firearms Safety
- Programming Made Easy: The “Learn” Button
 1. Gun Vault Safe Features and Functions
 2. Quick Start
 - Securing Your Keys
 - Installing the Battery Tray in the Safe
 - Getting Ready to Program
 - Choosing Your Own Access Code
 - Programming the Access Code
 3. Turning off Keypad Sound
 4. Tamper Detect Feature
 5. Security Sleep Mode
 6. Mounting the Safe
 7. Installation of optional Security Cable
 8. Motion Detection and Alarm Features (Deluxe Models)
 - Setting the Alarm
 - Setting the Sensitivity
 - Turning off the Audio Alarm
 9. Internal Courtesy Light (Deluxe Models)
 10. DC Power Jack, and Optional External AC/DC Adapter (Deluxe Models)
 11. Maintenance
 - Battery Replacement
 - Lubrication
 - Removable Shelf (MultiVault Only)
 12. Trouble Shooting
 - Security Sleep Mode
 - Low Battery Warning Indicator
 - Incorrect Battery Tray Installation
 - Factory-Default Code
 13. Technical Support
 - Requirements for Return & Repair
 14. “Limited Warranty”

Warnings and Recommendations

Anything in this manual that has been written in boldface type is a **WARNING**. Failure to observe these instructions constitutes a **MISUSE** of this product and may result in serious physical injury or **DEATH**.

NO UNAUTHORIZED REPAIR

Gunvault safes are serviceable at the factory only. Any tampering, unauthorized repair and/or modification will void all warranties, and may cause the safe to fail unexpectedly, or be damaged. If in doubt, call GunVault technical support.

FIREARMS SAFETY

WARNING: The MiniVault safe or MultiVault safe or any other firearm storage device cannot take the place of other safety procedures including advising children of the dangers of firearms.

WARNING: The manufacturers and distributors of MiniVault safe and/or MultiVault safe do not recommend, suggest, advise, promote or otherwise condone the ownership or use of firearms. We at Cannon believe the decision to own or use a firearm is a serious decision that should only be made by an adult who has carefully considered the risks and benefits of such a decision.

WARNING: The keypad and push buttons on the control panel are electronic. They have a certain feel to them and may seem different to different people. It is important for you to become accustomed through practice, as to how the MiniVault safe or MultiVault safe responds to your own personal touch.

WARNING: never mix alcohol or drugs with firearms or the MiniVault safe or MultiVault safe. Alcohol and other substances likely to impair normal mental or physical functions should not be used before shooting or handling firearms or the MiniVault safe or MultiVault safe.

WARNING: Never grab your firearm by the trigger when removing or placing into the MiniVault safe or MultiVault safe. Make sure your firearm's safety mechanism is on.

WARNING: Always point your firearm in a safe direction. Common sense should dictate which direction is the safest.

WARNING: Always follow the firearm safety rules set out by the firearm's manufacturer.

WARNING: Be familiar with how firearms work. GunVault recommends that you obtain as much information as possible on firearm safety.

WARNING: Always handle firearms as if they are loaded and ready to fire. Always assume that a firearm is loaded.

WARNING: In order to enjoy the maximum security benefits of the MiniVault safe or MultiVault safe product, it must be mounted in place using the equipment provided with the product, according to the instructions provided herein. Use of this product as a storage receptacle without mounting it according to the instructions provided herein, may compromise security of the MiniVault safe or MultiVault Safe.

WARNING: The battery holder provided with the MiniVault safe or MultiVault safe is reliable under moderate conditions of shock and vibration. If the MiniVault safe or MultiVault safe is to be used in mobile conditions such as in automobiles, aircraft, boats, or if high levels of shock and vibration are anticipated, it is possible that the power supply may become disconnected. In such an instance, access to the contents via the control panel will be impossible until the power supply is reconnected, but the key may be used

Programming Made Easy: Using the “Learn” Button

The key to programming the GunVault is understanding how the Learn Button works. When you press and hold the Learn Button correctly, you will hear a two-tone beep. When you hear this low/high tone combination, the unit is in “Learn” mode. Once in that mode, it’s easy to program the various features of your safe. The following table is a summary of the various features of Standard and Deluxe Model GunVault safes and how to program them. For more detailed, step-by-step instructions, see pages 9-11

FEATURE	HOW TO PLACE UNIT IN “LEARN” MODE	HOW TO PROGRAM
Program the access code	Press and hold the learn button once. You will then hear a two-tone beep – one low and one higher tone.	Place unit in “learn” mode, enter primary access code, confirm and store.
Adjust Motion Sensor sensitivity (Deluxe Models only)	Press and hold the learn button two times. You will then hear a two-tone beep – one low and two higher tones.	Put unit in “learn” mode, location two select desired sensitivity by pressing keypad buttons one (most sensitive) to four (least sensitive).
Toggle keypad sound off and on.	Press and hold the learn button three times. You will then hear a two-tone beep – one low and three higher tones.	Put unit in “learn” mode, location three then hold keypad buttons two and three until a green light is observed (approx. five seconds).

Congratulations on Your Purchase of a GunVault Safe!

Your new GunVault safe is a high quality product, which will give you years of service, backed up by excellent Technical Support and a strong Warranty. Before you get started reading this manual, please take a few moments to fill out your Warranty Registration Card and mail it in. Or register online at www.gunvault.com.



1. GunVault Safe Features and Functions

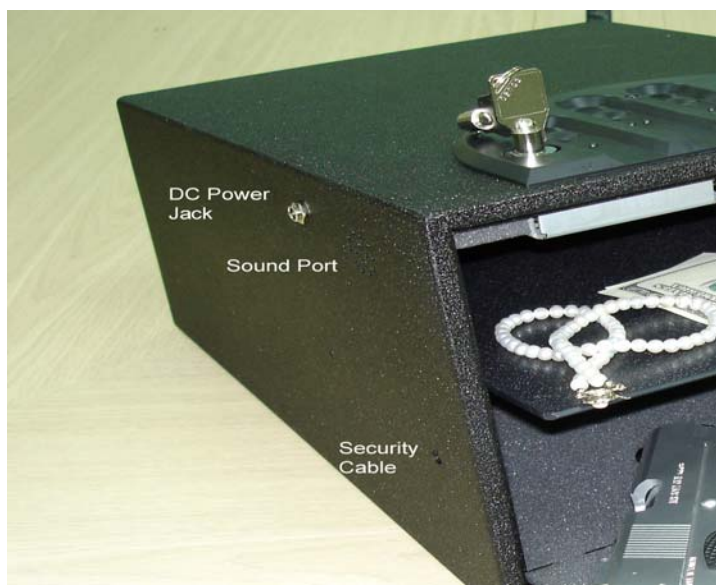
Product Description and Features

GunVault safes are manufactured from 16-gauge steel with pry-resistant doors and may be used to store a variety of items out of reach of children and other unauthorized persons.

Standard Features Include:

- Spring-loaded door for quick access to contents
- Corrosion resistant powder coat wrinkle finish
- No-Eyes Keypad
- Back-up key lock with two keys
- Security Sleep Mode in case of unauthorized keypad entries
- Low battery warning
- “Knock-outs” for installation of optional Security Cable

Deluxe Models provide the following additional features: (see Deluxe Model



Only instructions beginning on page 7)

- Interior Courtesy light
- Motion Detection and Audible Alarm
- Audio Low-Battery Warning
- Power connection jack for external power supply

Optional Accessories:

Steel Security Cable (see page 12)

AC/DC power adapter (not a charger – see page 13) for Deluxe Models – Radio Shack P/N 273-1680 (not carried by Cannon Safe, Inc.)

Each Gun Vault safe includes the following:

Inside unit carton:

GunVault safe

Plastic battery tray

Two plastic thumbnuts

Three safe mounting screws

Plastic shelf (MultiVault only)

Document package with

Two keys

Owner's Manual

Mounting Template

Warranty Card

2. Quick Start



GETTING STARTED

Set your keys to the side. Don't lock them inside the safe!

REMOVE YOUR KEYS AND SECURE THEM

Think carefully about storing your keys. If the key for a GunVault safe is on your key chain, an unauthorized person might gain access to it. Never hide or leave gun safe keys where children could gain access to them. If you have a bank safe deposit box, one key could be kept there in case you lose one.

IMPORTANT: We recommend that you use ONLY Duracell AA batteries. Eight (8) AA batteries are required. NEVER attempt to use a 9v battery or rechargeable batteries – they will not work!

LOCATE THE BATTERY TRAY KIT

Notice that it includes two plastic thumbnuts for mounting the battery



tray, and three GunVault safe mounting screws.

With your palm up, reach inside the GunVault safe and find the far end of the ceiling foam.

Pinch the far end, and carefully pull it part of the way out of the unit (like the tongue of a shoe). Do not tear it loose.



LOCATE THE POWER CONNECTOR WIRE, AND THE TRAY MOUNTING STUDS ON THE CEILING OF THE SAFE.



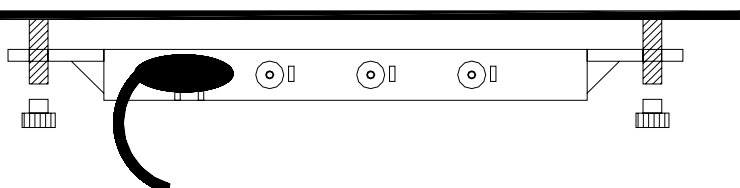
LOAD THE BATTERY TRAY

Make sure that the ends of each battery match the positive (+) and negative (-) marking in the tray exactly. Make sure that the batteries are not loose.

Installing the Battery Tray in the Safe

POSITION THE SAFE WITH DOOR FACING YOU, KEYPAD UPWARD

- Connect the power cable to the battery tray. You will hear a beep audio signal, confirming that power is connected.



- Do not pinch the power cable between the tray and the ceiling.
- Press the tray into position, aligning the slots/holes onto the mounting studs.
- Use the plastic thumbnuts to secure the tray.
- Do not over-tighten the plastic fasteners; snug is best.
- Press the foam ceiling back into your unit to cover the battery tray and wire-tuck in the far end to secure it.

CLOSE THE DOOR AND PRACTICE

Set your keys to the side. Do not lock them inside the vault!



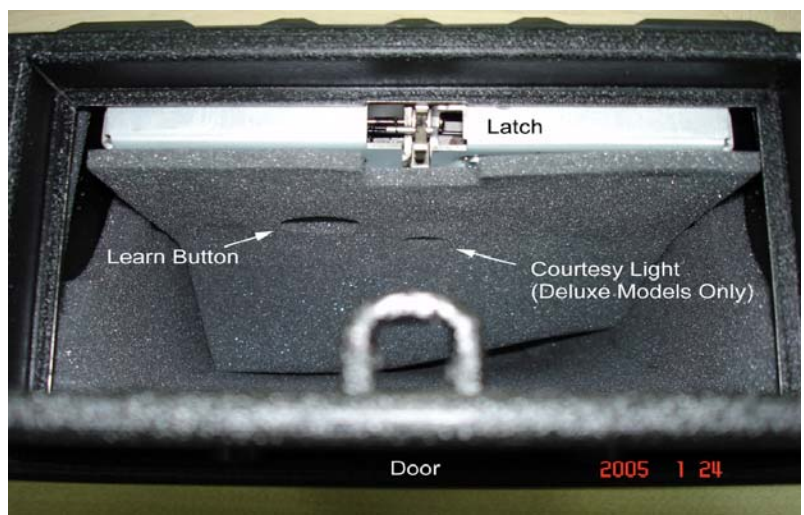
For practice, use the factory-default code, which is: Press each button one time, from left to right – one, two, three, four. (A common mistake is to press button one one, button two twice, button three three times, etc.) Notice the “feel” of the keypad; feel the “click” as you press each key.
One, Two, Three, Four

Getting Ready to Program

- Find the LED light in the keypad.
- It can glow either green or red. Depending upon the function being utilized.
- There is an audible beep when keys are pressed.

Choosing your Own Access Code

- Don't tell anyone your code.
- An access code is a series of entries on the keypad. **WARNING:** This is not a numeric keypad, you cannot program digits (there is no 5, 6, 7, 8, 9, or 10).
- An “entry” is a single press of one or more buttons at the same time.
- You can use a minimum of three entries, or a maximum of six entries, for your access code.
- For each entry of the access code, you may choose one, more than one or ALL of the buttons on the keypad in combination.
- Be careful in choosing your access code. You'll want to be sure that you can operate the unit quickly without making an entry error.
- Example of a valid access code; Press button one, press button two, press all four buttons together.
- Choose an access code which is



easy to use, but try to make it an access code which is difficult to guess.

- Your current address or phone number digits are not good choices, because the keypad only has four buttons.

Notes:

- Avoid programming in bright light; it might prevent you from seeing the red/green LED.
- Look directly down upon the keypad.
- Do not attempt to press the buttons with the safe resting upon a soft surface, such as a bed, a pillow, or a deep pile carpet.

Programming Your Access Code

Note: There is a soft “beep” sound and a brief light with each keypad entry. Enter the factory-default code, from left to right: one, two, three, four. The door will open. Leave the door open.

Find the Learn Button (see above).

- Press and hold the Learn Button for two seconds. You should see the green light and hear the two-tone beep – the unit is now in “learn” mode.
- Enter your new code. The light will remain green.
- Press and hold the Learn button again for two seconds. The light will turn red, and you will hear a beep. Release the Learn Button.
- While the light is red, enter your new code a second time to confirm it.
- Press and hold the Learn Button a third time for two seconds. Release the Learn button. The light will blink green five times. And you will hear five beeps, confirming that the new code has been accepted. If the red light blinks three times with three soft beeps at this point, and error has occurred. Just start over by depressing the Learn Button for two seconds.



3. Turning off Keypad Sound

- To disable the Keypad Sound (beeps), press and hold the Learn Button for two seconds, three times. The green light will blink three times and you will hear three beeps. Release the button. Then press and hold buttons two and three for five seconds. The Keypad Sound is now disabled,

but this does not disable the alarm sound.

4. **Tamper Detect Feature**

Entering an invalid access code sets the tamper indicator.

Hold down buttons two and three for five seconds to read the tamper indicator.

- If tampering has been detected, the red light will glow until buttons two and three are released.
- If tampering has not been detected, the green light will glow until buttons two and three are released.

5. **Security Sleep Mode**

The GunVault safe has a Security Sleep Mode. Twenty-four incorrect entries on the keypad triggers “Security Sleep Mode.” Sleep Mode lasts for two minutes. During Sleep Mode the keypad does not accept any entries. If a button is depressed during Sleep Mode, the LED blinks red and the alarm beeps three times.

6. **Mounting the Safe**

The Vault can be mounted in almost any direction. Think carefully before you begin to drill holes; make sure you could easily reach the keypad, but protect the safe from children.

IMPORTANT: Do not mount the Vault with the door facing down! The contents could fall out when the door is opened!

Think about your own unique mounting requirements. You may wish to use washers, lag bolts, or other mounting devices for reasons of your own.

Compare the Mounting Template to the safe.

Notice the mounting holes in the bottom of the safe. There are two “key-slot” holes, and four round holes.



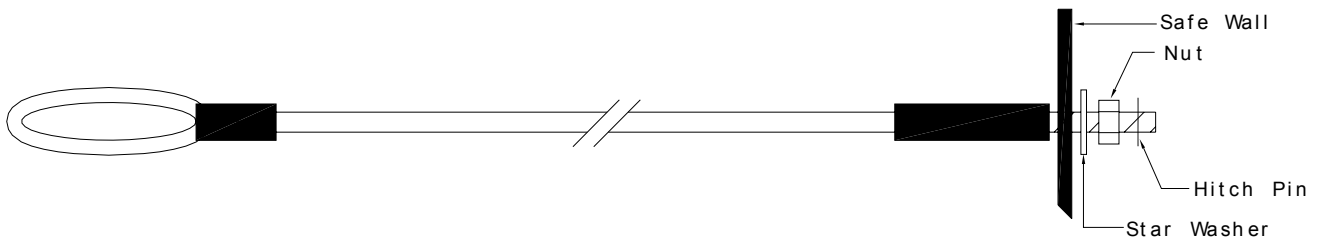
- a) Using the template provided, drill starter holes with drill bits appropriate for your installation. Drive screws only into the two key-slot holes. Drive the screws in until just enough room is left between the head of the screw and the mounting surface to permit you to slide the Vault’s key slots over the screws.
- b) Slide the Vault key-slots on over the screws.
- c) Now lift the foam padding in the bottom of the Vault and insert screws into remaining holes as desired, to retain the safe in place. A minimum of three (3) screws must be used to mount the safe.
- d) Tighten all screws and smooth the foam lining. Your Vault is now securely attached to the

mounting surface!

7. **Installation of Optional Security Cable**

“Knock-outs” are provided on both sides to permit attachment of the Security Cable. If the Security Cable is to be installed, use a punch or nailset and a hammer to remove the knock-out. Before inserting cable mount, be sure to remove the little metal knock-out tab from your safe. Do not allow this small metal piece to remain inside your safe. Hint: A pair of needle-nosed pliers will be useful for installing the hitch pin.

- a) First, loop the end of the security cable through the eye and around a stationary object.
- b) Then, insert the threaded mount through the hole in the safe.
- c) Hold the mount in place while you slide the star washer over the threaded end inside the safe.
- d) Spin on the nut and tighten “finger tight.”
- e) Insert the Hitch Pin through the hole in the threaded mount, to ensure that the nut cannot come off.



8. **Motion Detection and Alarm Features (Deluxe Models Only)**

Deluxe Model GunVault safes are equipped with Motion Detectors and Audio Alarms. Once armed, this system will protect the safe and its contents if either one of the following occurs:

1. Twenty-four wrong entries are entered into the keypad in succession.
 2. The safe is moved or disturbed.
- If the Motion Detector is armed, shock, vibration or motion of any kind may trigger the Audio Alarm.
 - If the alarm is triggered, a four second continuous tone will sound, followed by 25 short audio ticks, indicating that the alarm is about to sound.
 - This pre-alarm delay will last for about ten seconds, after which the alarm will sound for one minute.
 - If a valid code is entered during this period, the alarm will stop.
 - If the alarm is not turned off, it will enter Battery Saver Mode after two minutes. In Battery Saver Mode the alarm will sound once per minute. Turn the alarm off at any time by entering the access code.

Setting the Alarm

To arm the Motion Detector Feature, press buttons one and four at the same time and hold for more than five seconds. A beep will sound once per second for 10 seconds. The alarm feature is now armed.

Setting the Sensitivity

The Motion Detector has four levels of sensitivity. Level one is the MOST sensitive, and level four is the LEAST sensitive. The factory setting is level two.

- To change the sensitivity level, press and hold the Learn Button two times, for two seconds each press. The green light will flash and a beep will be heard each time.
- The sensitivity level is now set.

EXAMPLES:

1. Press button one to select the highest sensitivity.
2. Press button four to select the lowest sensitivity.

Turning off the Audio Alarm

- To disable the Audio Alarm, enter a valid access code. If the alarm has already been triggered, enter a valid access code. If an invalid access code has been entered, and the alarm is sounding, wait a few seconds and enter a valid access code. Note: Once a valid access code has been entered, the alarm and motion sensor are disabled. To re-enable the alarm function, follow the instructions for setting the alarm.

9. Internal Courtesy Light (Deluxe Models Only)

When an access code has been used to open the safe, the interior light will shine for five seconds, allowing a clear view of the interior.

10. DC Power Jack, and Optimal External AC/DC Power Supply (Deluxe Models Only)

Warning: *Never attempt to operate the safe with external power alone. Batteries MUST be installed before and during operation with the external power supply, in order to avoid interruption of power and loss of access codes.*

Any interruption of power will cause the computer memory to reset to the factory code: one, two, three, four. If this occurs, anyone who enters the one-two-three-four code will gain access to the safe and its contents.

Warning: *Never attempt to plug in a battery charger of any kind. Fire or explosion of batteries could result. Never use rechargeable batteries of any kind in a GunVault safe. Their power characteristics are not compatible with the safe.*

The AC/DC power supply specified is NOT a battery charger; it is an external power supply to be used only when batteries are installed.

The recommended AC/DC power supply is a Radio Shack P/N 273-1680 or equivalent regulated adapter with positive tip polarity. Use the 12 VDC setting only. Maximum permissible input voltage is 14.0 VDC.

11. Maintenance

Battery Replacement

IMPORTANT: On Standard Model GunVaults, the low-battery indication is seven red flashes and seven

soft beeps when the keypad is operated. Check connections, orientation of batteries, and orientation of battery tray. You cannot program your safe while the light is blinking. Deluxe Model Gun Vaults provide an audio warning of a low-battery condition. This warning sounds once per hour in the form of two loud, high-pitched beeps.

Warning: Replace the batteries once a year regardless of whether or not the low battery indication is observed.

Always check carefully to be sure that all of your batteries are facing in the correct direction. One battery facing the wrong way will lower the power output of your battery tray, potentially causing unreliable operation.

After replacing the batteries, or when power has been disconnected for more than a few seconds, the unit will revert to the factory-default code (one, two, three, four) and you must re-program your personal access code(s).

Lubrication

It's a good idea to lightly coat the door hinge spring and door latch-loop with quality oil at least once a year. Never spray anything into the latch mechanism.

Removable Shelf (MultiVault only)

The MultiVault (large model) has a removable shelf, which can be easily pulled out to allow for storage of larger items. If the shelf is removed, it should be stored carefully to avoid damage or loss. To reinstall, simply slide the shelf back into the shelf guide slots. The beveled edge faces front.

12. Troubleshooting

Security Sleep Mode:

More than 24 consecutive incorrect entries will trigger Security Sleep Mode. (If the correct code is entered within the 24 entries, the door will open.) Sleep Mode ends automatically at approximately two minutes. During sleep Mode the backup key may be used to open the safe.

Low Battery Warning Indicator

The low battery indication on standard models is seven red flashes and seven soft beeps when the valid access code is entered. This indication means that insufficient power is available from the battery tray - the unit may continue to work normally, but the batteries must be changed immediately. ON deluxe models the low battery indication is an audio alert which sounds once per hour in the form of two loud beeps. Check battery tray and battery tray installation, connections, orientation of batteries, and condition of batteries. You cannot program your safe while the light is blinking.

Incorrect Battery Tray Installation

Check to be sure that the battery tray is installed as shown in the instructions (Review instructions on pages 8-9). The batteries must be installed correctly (i.e. positive (+) end to positive symbol, negative (-) end to negative symbol), the power cable must be connected snugly, and the power cable should not be pinched against the ceiling of the safe.

Factory-Default Code

If power is disconnected for more than 90 seconds, the computer will automatically reset to the factory

default code (one, two, three, four).

13. Technical Support

If you have followed the above steps carefully and still have a problem operating your GunVault, phone Cannon Safe Technical Support. Almost all problems can be solved within minutes over the telephone.

Requirements for Return & Repair

If possible, do not return your GunVault safe to your dealer. Instead, call Cannon Safe Technical Support can solve most problems over the telephone, making return unnecessary. Cannon Safe delivered without a pre-arranged Return Authorization Number may be returned unopened, at owner expense, and fees may accrue.

FEES & CHARGES

Under warranty; repair or replacement at GunVault's option, and free UPS ground return shipping within the contiguous U.S.

Out of warranty; minimum fee for examination and handling is \$19.95. Parts and labor may be extra, depending upon condition.

1. GunVault safes delivered without a pre-arranged Return Authorization Number may be returned unopened, at owner expense.
2. GunVault safes sent for repair with heavy objects inside may be damaged in shipping, and corresponding repairs may be charged to the owner.
3. Tape the keys to the top of the safe before shipping.
4. When proper Return Authorization has been obtained, the MiniVault safe and/or MultiVault should be shipped in its original carton or in a suitable sturdy equivalent, fully insured, and with the shipping charges PREPAID unless otherwise arranged with the Company in advance.

Abandonment for Failure to Pay required Fees

GunVault safes left without payment of required fees for more than 90 days will be considered to be abandoned and will be disposed of.

14. "Limited Warranty"

1. GunVault (the "Company") warrants to the original consumer (the "Purchaser") that the MiniVault safe and/or MultiVault Safe (the "MiniVault safe" and/or the "MultiVault safe") will be free from defects in workmanship and materials for a period of one (1) year from the date of purchase. These warranties are not assignable or transferable to any other person.
2. Any damage to the MiniVault safe and/or MultiVault safe as a result of misuse, tampering, abuse, neglect, accident, improper installation, modification, unauthorized service, destruction, or the alteration of the serial number, or use violative of the instructions furnished by the Company will void this warranty.
3. The sole responsibility of the Company shall be limited to the repair or replacement (in its sole

discretion) of any component of the MiniVault safe and/or MultiVault safe which fails to conform to this warranty at no cost to the purchaser for a period of one (1) year from the date of original purchase.

4. Contact the Company directly to obtain service under this warranty. If it becomes necessary to send a defective product to the Company, a Return Authorization Number must first be obtained from the company.
5. Products shipped without prior Return Authorizat on and Return Authorization Number may not be accepted, and the Company will not be responsible for their disposition and/or cost of return to the owner.
6. The Company will not assume any responsibility for any loss or damage incurred in shipping. All return authorized products should include a copy of the original invoice in order that this warranty may be honored.
7. This warranty is not an insurance policy. The Company is not responsible for damage to or theft of the Purchaser's MiniVault safe and/or MultiVault safe or its contents.
8. We recommend that the enclosed warranty card be completed in full, and returned to the Company within ten (10) days of the original date of purchase to validate this warranty.
9. any implied warranties which the purchaser may have are limited to the duration of the warranties described above. There are no further warranties which extend or apply beyond the face hereof, and the company expressly disclaims and excludes any and all warranties of merchant ability or fitness for a particular purpose. Some states do not allow limitations on how long an implied warranty lasts, so the above limitation may not apply to you.
10. Repair or replacement shall be the sole remedy for the purchaser under this warranty. The company shall not be liable for any direct, indirect, incidental or consequential damages, losses or expense arising from the use or misuse of the MiniVault safe and/or MultiVault safe. Some states do not allow the exclusion or limitations of incidental or consequential damages, so the limitation may not apply to you.
11. This warranty gives you specific legal rights, and you may also have other rights which vary from state to state.

Inquiries or questions regarding MiniVault or MultiVault safes should be directed to :

Customer Support 800-242-1055